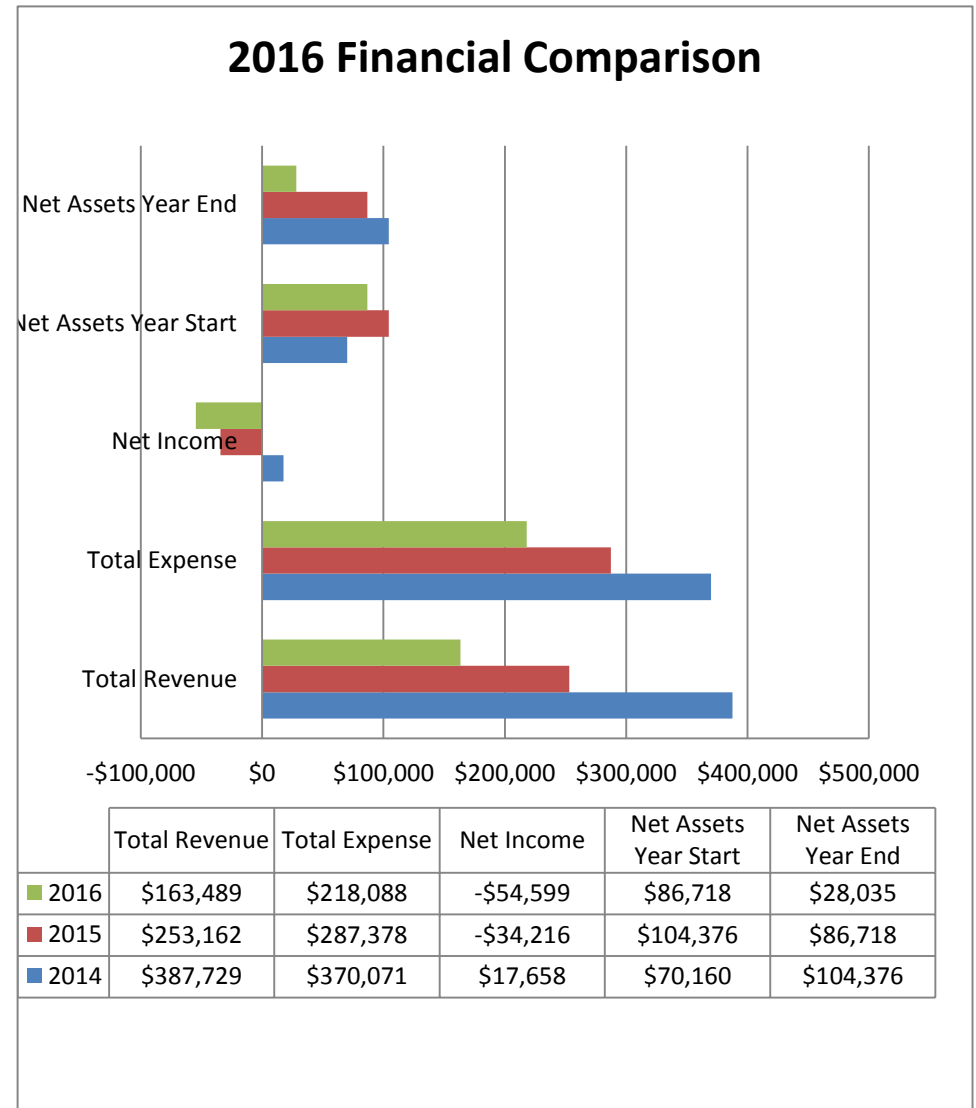
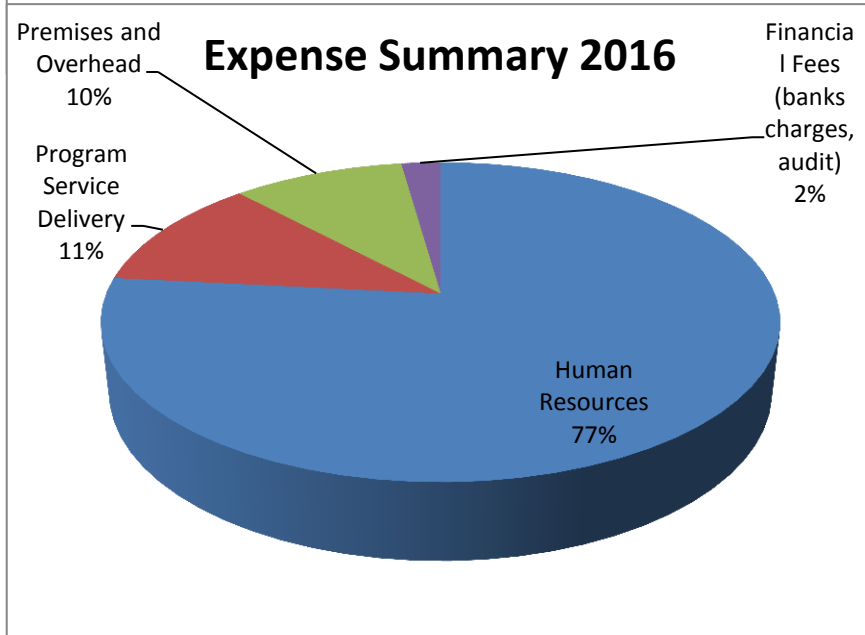
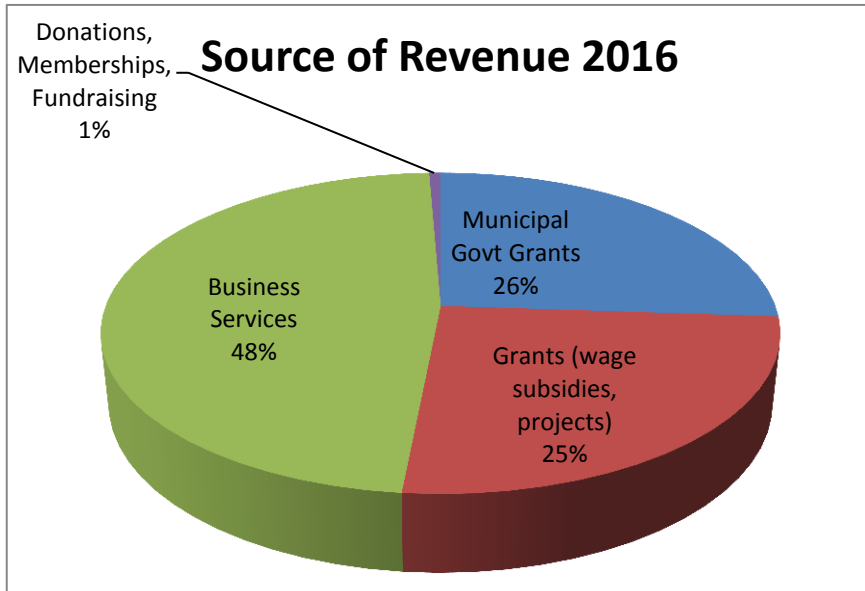


# 2016 FINANCIAL SUMMARY REPORT: SOCIAL DEVELOPMENT CENTRE WATERLOO REGION

Figures used in this report for 2016 are from unaudited statements. Figures for 2015 and 2014 are taken from financial statements audited by KPMG. The 2016 revenue sources and allocation of expenses presented in the following charts are composite subtotals. Detailed statements are available on request.



	Total Revenue	Total Expense	Net Income	Net Assets Year Start	Net Assets Year End
2016	\$163,489	\$218,088	-\$54,599	\$86,718	\$28,035
2015	\$253,162	\$287,378	-\$34,216	\$104,376	\$86,718
2014	\$387,729	\$370,071	\$17,658	\$70,160	\$104,376